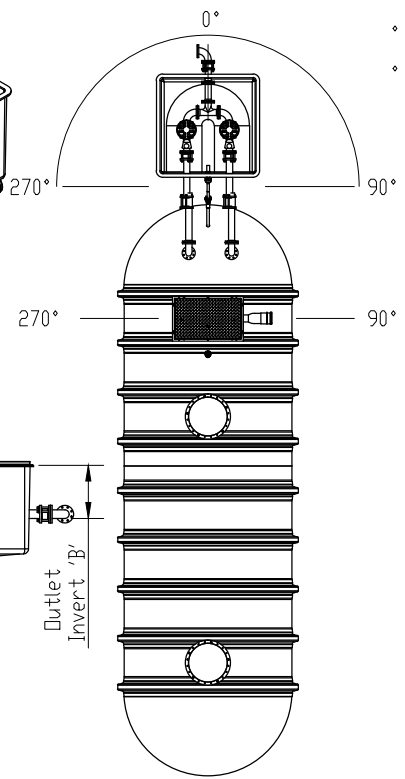


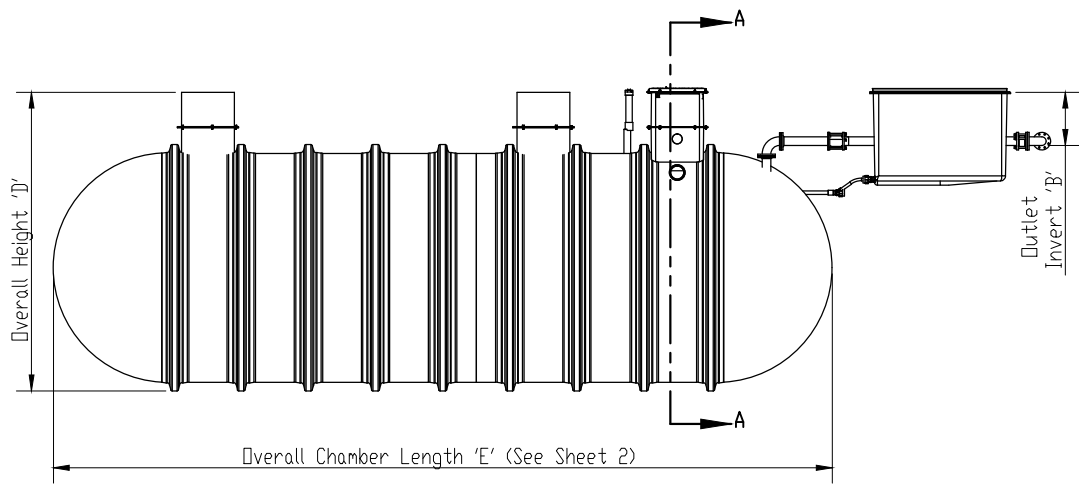
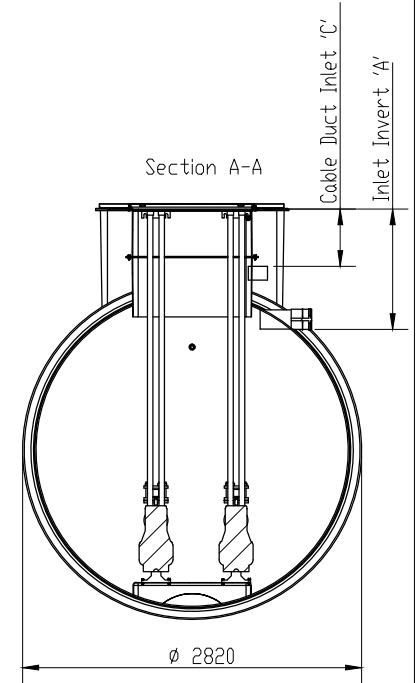
Inlet Invert 'A'	Outlet Invert 'B'	Cable Duct 'C'	Overall Height 'D'
1000mm	600mm	500mm	3420mm
1500mm	600mm	600mm	3920mm
2000mm	600mm	600mm	4420mm
2500mm	600mm	600mm	4420mm
3000mm	600mm	600mm	4420mm

Notes

- Pump chamber delivered with pumps and valve chamber separate. This is to avoid un-necessary damage.
- Pumps should be coupled to chains in order to assist installation.
- Please read operating and installation guidelines before attempting to install the pump chamber.



Valve Chamber and Inlet Orientation



Please check with Environmental Treatment Services Ltd that this drawing is the latest issue				Material : Various	Tolerance : n/a	Drawing : DS0828K	Page 1 of 2
Issue	Date	Drawn by	Description	Finish : n/a	Thickness : n/a		
01	15/03/07	ATD	Initial Release	Weight : 2388.99	Surface Area : n/a	Sewage Horizontal Pump Chamber - Ductile	
All dimensions in mm			Scale: Not to scale				